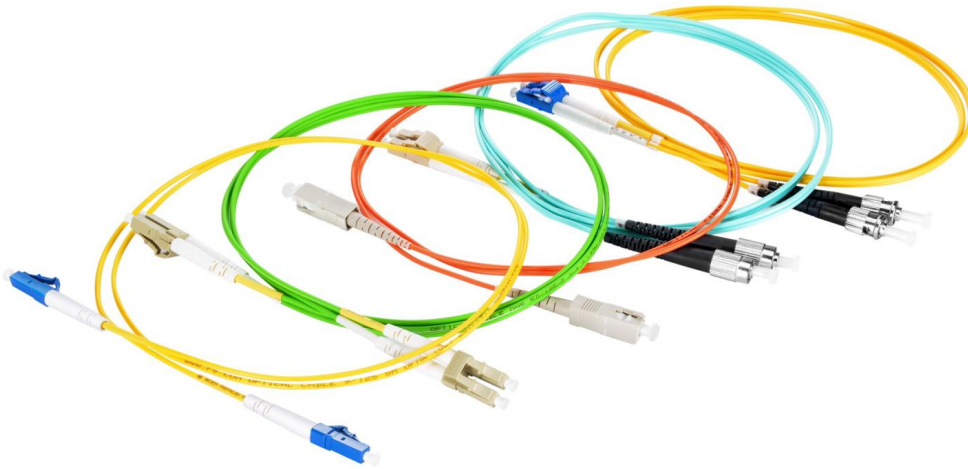


OPTICO Duplex Fiber Patch Cord

Ideal for 1G/10G/40G/100G Ethernet connections.

Designed for data center, enterprise, FTTX, LAN and WAN, CATV network, telecom network applications, etc. requiring quick infrastructure deployment such as main, horizontal, and zone distribution areas.



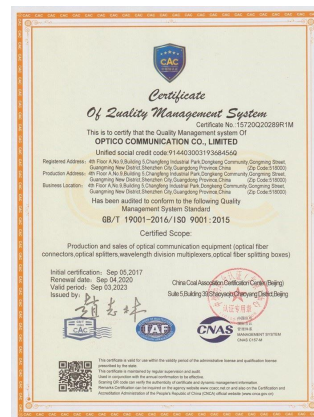
• Description

Fiber optic patch cables are the ideal solution for today's high-speed data transfer connections. OPTICO patch cords feature a low insertion loss and high return loss. They are specially designed to meet the demand of Gigabit Ethernet, 10 Gigabit Ethernet and high speed Fiber Channel. Every termination is through rigorous parameter test to ensure the highest network performance.

• Features

- High quality CCTC ceramic ferrules
- Good repeatability and stable data interchangeability
- CE/CPR/ISO/RoHS standards
- Flame-retardant and rugged jacket
- IL&RL/3D/end face 100% tested before delivery
- High and low temperature cycle test

• Certificates



- Technical Specification

Characteristics	Parameter
Connector Type	LC/SC/FC/ST/MU/MTRJ/E2000/Customized
Fiber Count	Duplex
Connector Ferrule	Zirconia Ceramic
Polish Type	SMF: UPC/APC MMF: UPC
Fiber Type	Single-mode: OS2 Multi-mode: OM1/OM2/OM3/OM4/OM5
Jacket Color	OS2: Yellow OM1/OM2: Orange; OM3/OM4: Aqua; OM5: Lime Green
Jacket Material	PVC/LSZH
Fiber Grade	SMF: G.657.A/G.652.D OM1: G.651; OM2/OM3/OM4/OM5: Bend Insensitive
Min. Bend Radius	SMF: 10mm/30mm MMF: 7.5mm/15mm
Cable Outside Diameter	Duplex: 2.0/3.0mm
Plug Testing	≥1000 times
Tensile Strength	0.9mm(9N); 2.0mm(70N); 3.0mm(75N)

Characteristics	Parameter
Insertion Loss (dB)	0.20dB Average ≤0.12dB, Max ≤0.25dB
Return Loss (dB)	SMF: UPC≥55dB, APC≥65dB MMF: UPC≥35dB
Wavelength (nm)	Single-mode: 1310/1490/1550 Multi-mode: 850/1300
Repeatability (dB)	≤ 0.1
Vibration (dB)	≤ 0.2
Interchangeability (dB)	≤ 0.2
Operating & Storage Temperature (°C)	-40 ~ +85